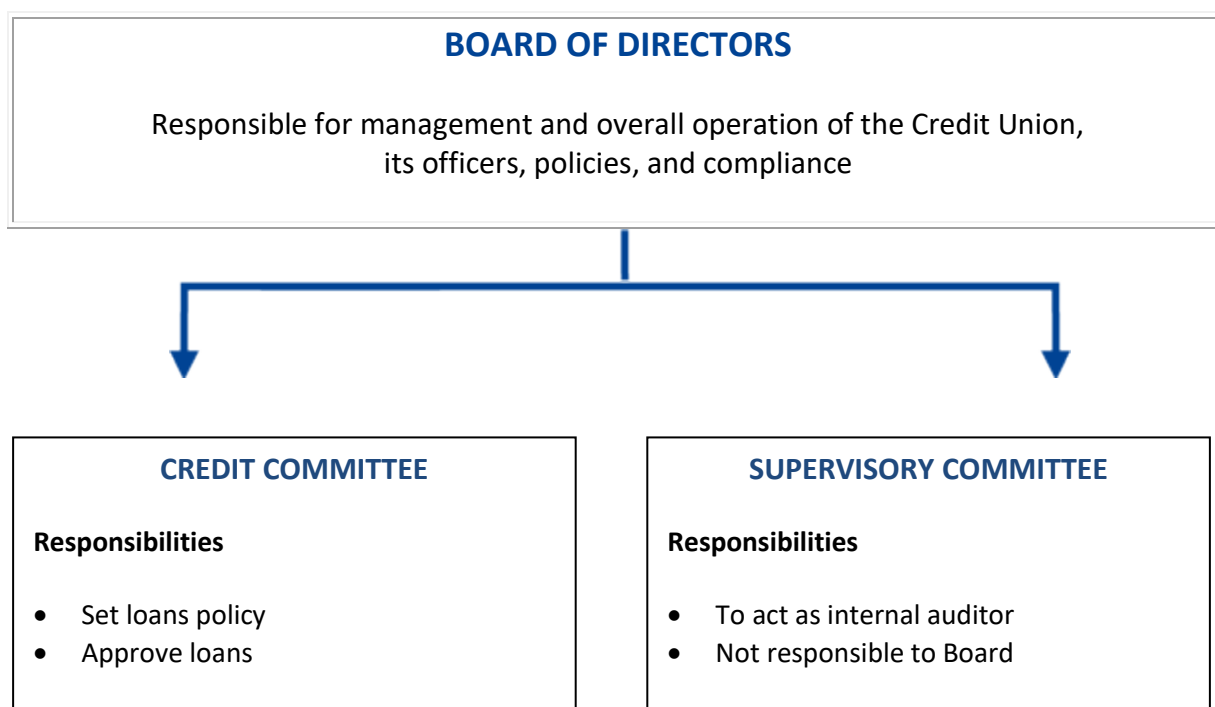


Organisational Chart

Members are elected at each Annual General Meeting



A number of teams within the Credit Union, perform specific roles and report to the Board of Directors. These include -

- The Treasury Team
- The Promotion and Marketing Team

Others positions provide member services and include -

- Membership Officer
- Compliance Officer
- Complaints Officer
- Share Withdrawals Officer
- Delinquency Officer
-

The Credit Union is run by its members who volunteer their time freely. If you would like to help, please email creditunion@norwich.gov.uk or speak to one of the Directors..