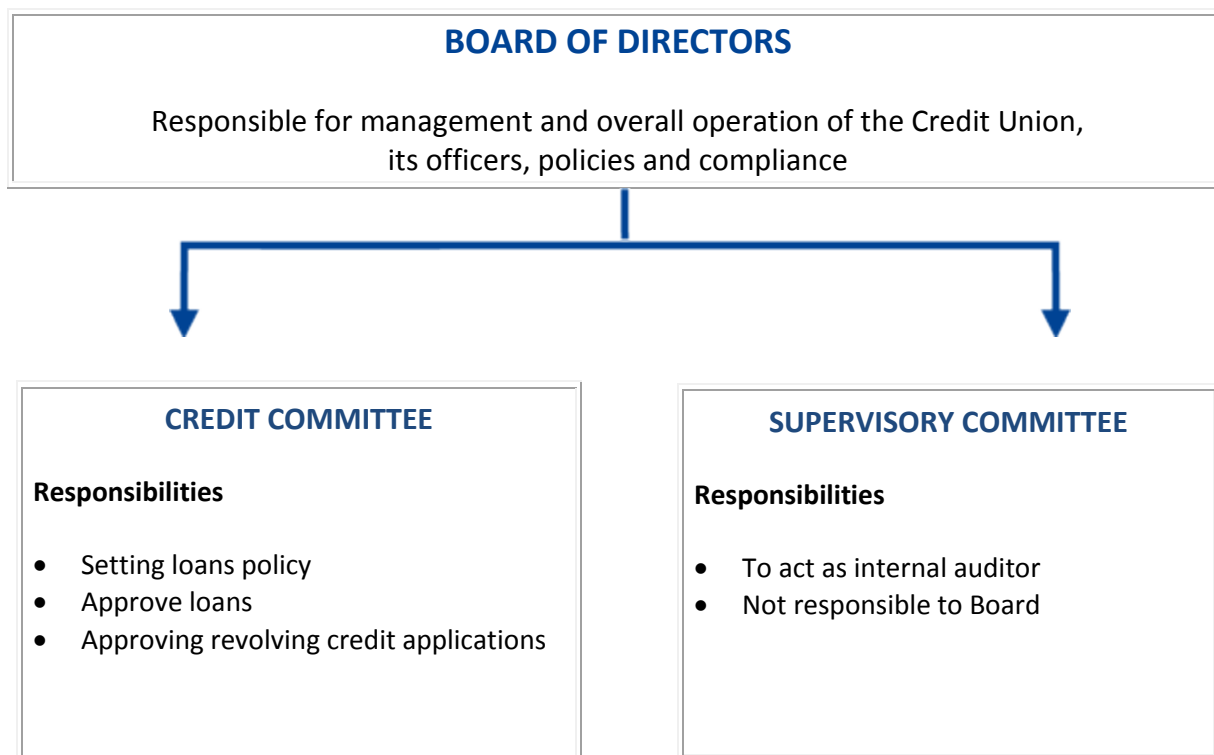


# Organisational Chart

Members are elected at each Annual General Meeting



**There are a number of teams within the Credit Union which perform specific roles and report to the Board of Directors. These include -**

- The Treasury Team
- The Promotion and Marketing Team

**Others positions provide member services and include -**

- Membership Officer
- Compliance Officer
- Complaints Officer
- Share Withdrawals Officer
- Delinquency Officer

The Credit Union is run by its members who volunteer their time freely. If you would like to help, please speak to one of the Directors.